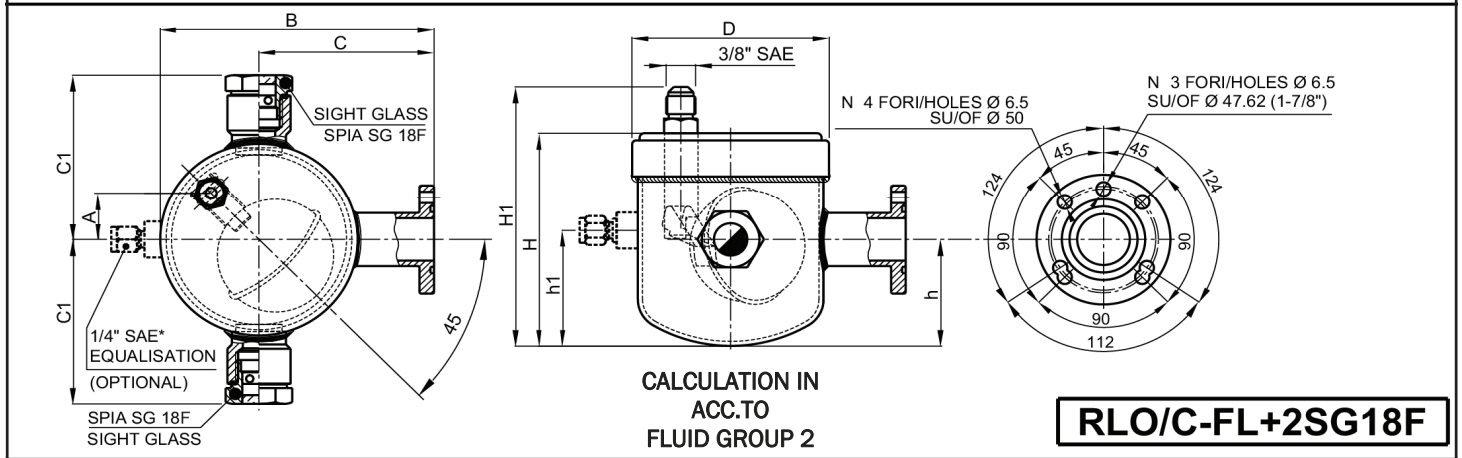
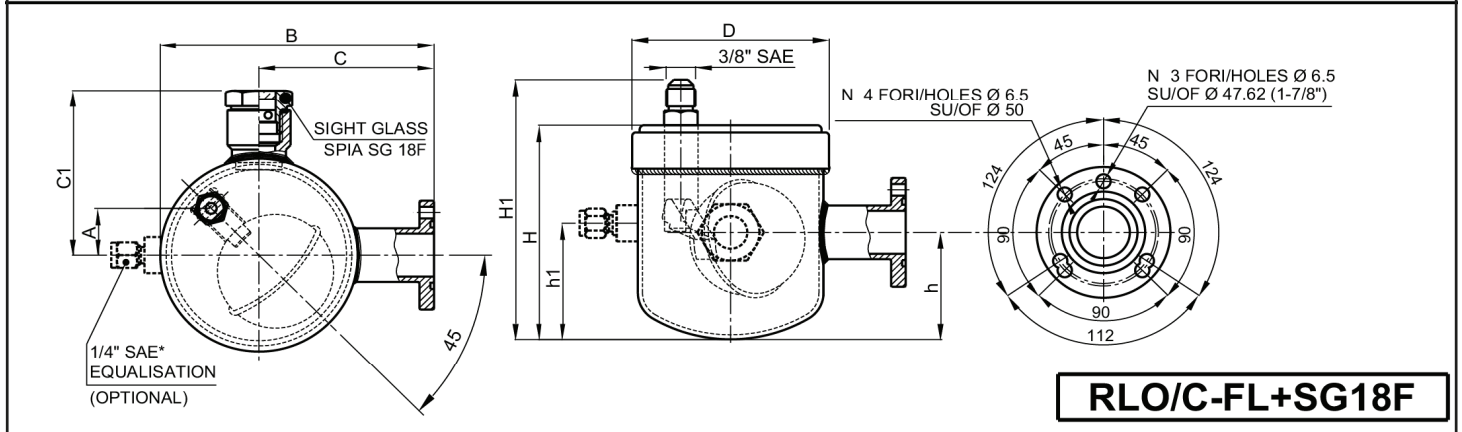
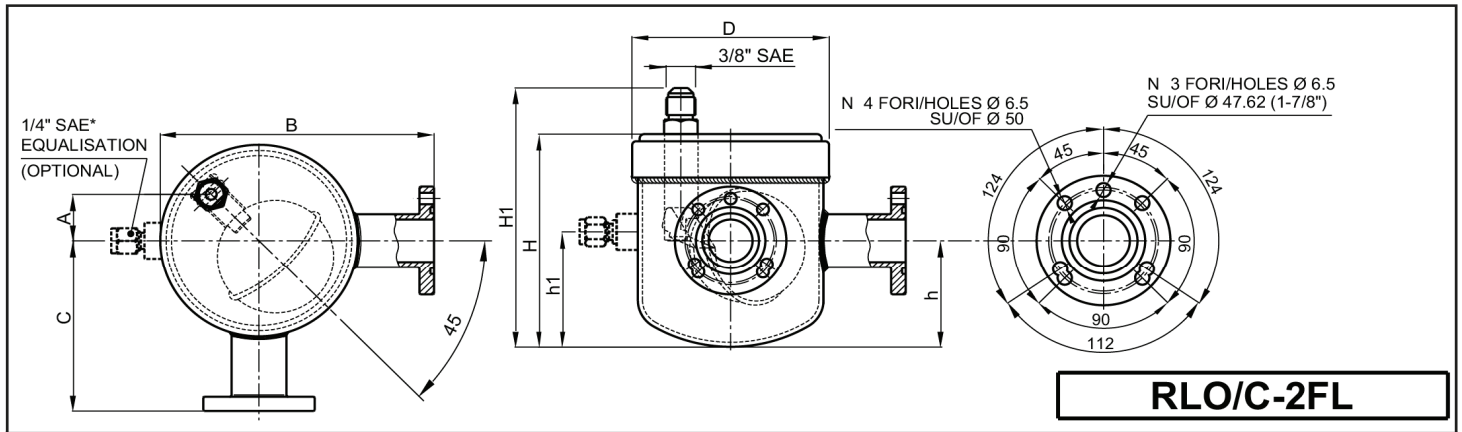


REGOLATORE LIVELLO OLIO MECCANICO / MECHANICAL OIL LEVEL REGULATOR



DATI TECNICI, TECHNICAL DATA

Temperatura TS - °C Temperature TS - °C	Min. -10 Max. +140	Min. -50 Max. +140	Pressione di collaudo PT Test pressure PT
Pressione max. consentita PS-bar Max permissible pressure PS-bar	31	23	PT-bar: 34 (31x1.1)
NOTE: E' possibile fornire tutti i modelli con pressione massima di esercizio fino a 45 bar / It is possible to supply all models with max working pressure till 45 bar			
Refrigerants: HCFC-HFC-HFO-HC ,CO₂ and other ones with low GWP			

PED CAT.	TIPO / TYPE	VOLUME litri litres	DIMENSIONI / DIMENSIONS								LIVELLO OLIO SPIA SIGHT GLASS OIL LEVEL	Pressione differenziale di lavoro permessa (bar) Allowable differential oil pressure (bar)	*EQUALIZZAZIONE *EQUALISATION	
			D	H1	H	h	A	B	C	C1			1/4" SAE	h1
Art.4§3	RLO/C-2FL/L	0.70	106	143	118	61	27	138	85	/	1/2	0.35 + 2.1	OPTIONAL	65
	RLO/C-FL+SG18F/L	0.70	106	143	118	61	27	138	85	91	1/2			
	RLO/C-FL+2SG18F/L	0.70	106	143	118	61	27	138	85	91	1/2			
	RLO/C-2FL/H	0.70	106	143	118	61	27	138	85	/	1/2			
	RLO/C-FL+SG18F/H	0.70	106	143	118	61	27	138	85	91	1/2			
	RLO/C-FL+2SG18F/H	0.70	106	143	118	61	27	138	85	91	1/2	2.1 + 6.5		

N.B. A norma di legge il presente catalogo non può essere riprodotto nei testi e nelle rappresentazioni grafiche da ditte concorrenti. NOTES: According to the law in force, any text or graphic reproduction of this catalogue, even partial, is strictly prohibited.

NOTA: I dati riportati nel presente catalogo non costituiscono documenti contrattuali. NOTE: Data indicated on the present catalogue are not contractually binding.